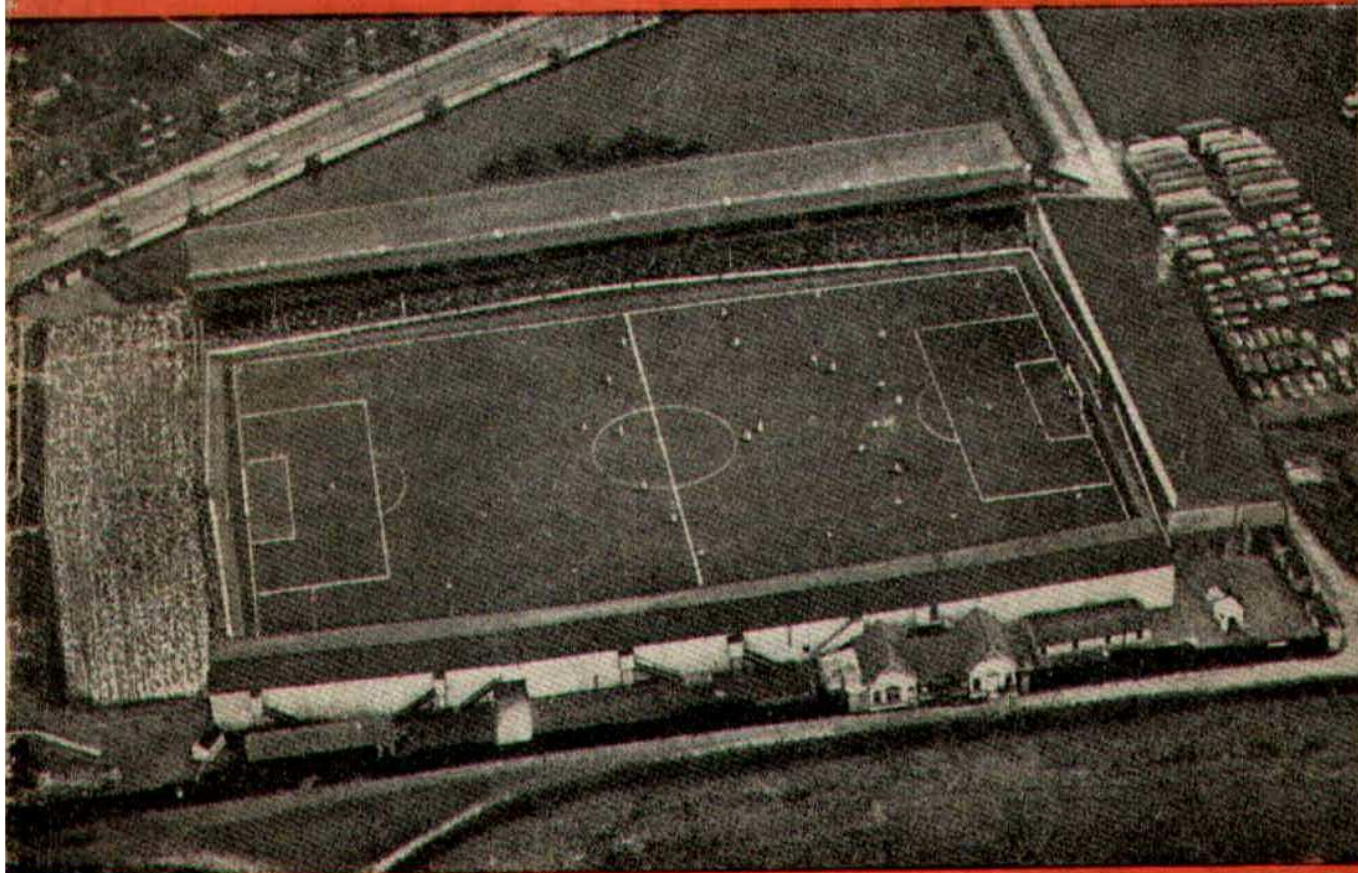




SWINDON TOWN FOOTBALL CLUB



FRIDAY, FEBRUARY 23rd, 1962

DIVISION III

SWINDON TN. v. BRENTFORD

Kick-off 7.30 p.m.

Official Programme **4d.**

**SOUTHERN LAUNDRY
CO. LTD.**

Laundrers and Dry Cleaners



TELEPHONE 4161

STATION RD., SWINDON

GO MODERN — GO ELECTRIC

for

TELEVISION, RADIO AND
DOMESTIC APPLIANCES

D. ROBSON

22 HAVELOCK STREET

6602

Swindon

6602

Make your Goal the

EAGLE HOTEL

(Prop.: Tom Hamilton)

WORTHINGTON :: GUINNESS

DEVENISH BEERS :: BASS

REGENT ST., SWINDON

LITTLE & CO. LTD.

The Name Linked with Service
and Value

*The Popular Ladies' and Men's
Complete Outfitters*



31-32 FLEET ST., SWINDON

Telephone 22831

NEXT MATCH . . .

INTERNATIONAL CLUB MATCH

SWINDON T. v. BRONSHOJ B.
(DENMARK)

SATURDAY, MARCH 3rd, 1962

Kick-off 3 p.m.

Dr. BARNADO'S HOMES

Take care of 7,500 needy children and
still depend on public support

Send your donation to—

**Barnardo House, Stepney
Causeway, London, E.1.**

Donated by: Mrs. S. Mutch, 60
Cricklade Road, Swindon

LEESE, ING & Co. Ltd.

Incorporating BARKER & CO.

*Mineral Water and
Squash Manufacturers*



LANDS DOWN RD., SWINDON

Telephone 22744/22320

HULFORD MOTORS Ltd.

SELF DRIVE HIRE

Fleet of 1962 Fords
Populars - Anglias - Consuls

SHRIVENHAM ROAD

(200 yards from Football Ground)

Phone 4934

LARGE CAR PARK AVAILABLE

For Quality
FLOWERS, FRUIT & VEGETABLES
Also FROZEN FOODS

**CLARKE'S
of Old Swindon**

Proprietors A. G. G. & J. A. W. HUNT

64 DEVIZES ROAD - SWINDON

'Phone: 22337

ORDERS DELIVERED

SWINDON TOWN FOOTBALL COMPANY LIMITED

Registered Office: COUNTY GROUND, SWINDON

Directors:

Mr. W. J. CASTLE (Chairman)

Mr. H. E. LANE (Vice-Chairman)

Mr. B. T. HAMILTON (Hon. Treasurer)

Messrs. C. CHANDLER, J.P., J. DAVIES,

R. FRICKER, C. J. GREEN, F. PLYER, H. WILLIAMS and K. H. WILMER

Manager: B. J. HEAD.

Secretary: R. A. MORSE

VOL. 12

FRIDAY, FEBRUARY 23rd, 1962

No. 20

Club Notes

The result at Swindon was very gratifying. Swindon seem to be earning a reputation as "draw" specialists—a certain X. However, it was a splendid performance on the part of our lads, a real team effort. Two goals down after thirty minutes (incidentally, the goals came within a minute of each other), and then to fight back to 2-2 was excellent. Actually, in the second half Swindon got right on top, and really took control of the game, and could easily have won in the last few minutes, when the goalkeeper dropped the ball.

The weather conditions were very difficult — a strong wind blowing straight down the pitch, the gale which did so much damage in the north of England even blowing down pylons carrying lights. The surface itself was in perfect condition, a delight to play on, and our lads would really have gone to town on this pitch, but for the wind. However,

another valuable point, but the gate was disappointing, 5,400 spectators. As we had to travel overnight, our share of the gate will not cover our expenses of the trip.

In our last programme we gave the full details of weekly expenditure, a grand total of £829-6-9. Below we append a summary of match receipts and payments for the game against Northampton on Saturday, 10th February.

Total Gross Takings—£1198 19.

Payments

	£	s.	d.
Printing, Advertising ...	15	0	0
Gatemen	28	13	0
Police	10	0	0
League Percentage ...	45	15	6
Amount to Visitors ...	224	10	1

TOTAL £323 3 2

The amount remaining to Swindon is £874-3-2, and that to cover at least two weeks' expenses. A glance at the first figure mentioned will give some idea of the problem facing the club. All supporters now have a complete picture of weekly receipts and expenditure.

THE WALCOT CHEMIST

WIDE RANGE OF COSMETICS, PERFUMES,
BABY NEEDS AND PHOTOGRAPHIC GOODS

10 SUSSEX SQUARE - WALCOT
TEL. 6680

M. J. REYNOLDS

Grocer

152/154 CRICKLADE ROAD
5479 SWINDON 5479

COOKED HAM OUR SPECIALITY

**WATSON'S
CENTRAL NEWSAGENCY**

LTD.

Swindon's Leading Wholesaler

1 WELLINGTON STREET, SWINDON
Tel. 22049

L. WOLLEN

OFF LICENCE

WINES & SPIRITS

Arkell's Ales and Stout

373 Cricklade Rd., Swindon

Deliveries Daily Phone 3508

TICKETS

Tickets for seats in the Stand for Division III matches may be booked in advance on application to the office, or, by post. Postal applications should be accompanied by a remittance and stamped, addressed envelope.

Please note the new prices for Stand tickets.

NEW STAND

Blocks 'A' and 'E'	4/6d.
Blocks 'B' and 'D'	5/6d.
Block 'C'	6/6d.

OLD STAND

Blocks 'F', 'G' and 'I'	4/-d.
Block 'H'	5/6d.

FOR ALL YOUR ANGLING NEEDS
CONSULT

FRANK WOODWARD

Swindon's Fishing Tackle Specialist

25 HAVELOCK ST., SWINDON
PHONE 3879

WE ARE SPECIALISTS IN —
OUTSIDE CATERING AND LICENSED BARS
FOR WEDDINGS, FETES, SPORTS DAYS, etc.

**THE MASONS ARMS
HOTEL**

31 HIGH STREET - SWINDON 3522

H. E. LANE

(REGENT STREET) LTD.

The Pork Sausage Specialists

117 Victoria Road, Swindon

Telephone: 22336

COMLEY'S

Modern Music Centre

26 HAVELOCK ST., SWINDON

RECORDS - MUSIC - INSTRUMENTS

Top Twenty "Pops" always in stock
and wide selection of Jazz and Classics

PERSONAL SUPERVISION

Phone 3874

FIXTURES AND RESULTS TO DATE

DIVISION III

1961

Aug. 19	Portsmouth	H	1-3
21	Coventry City	A	1-2
26	Crystal Palace	A	1-3
29	Coventry City	H	3-3
Sept. 2	Bournemouth	H	1-1
4	Queen's Park R.	A	1-6
9	Watford	A	0-2
16	Hull City	H	1-1
19	Barnsley	H	1-1
23	Northampton T.	A	2-1
27	Barnsley	A	2-6
30	Lincoln City	H	4-0
Oct. 3	Grimsby Town	H	0-0
7	Brentford	A	0-1
10	Grimsby Town	A	1-0
13	Reading	H	1-1
17	Queen's Park R.	H	0-0
21	Bristol City	A	3-5
28	Bradford	H	3-2
Nov. 4	(1) Kettering T.	H	2-2
8	Kettering T.	A	0-3
11	Shrewsbury Tn.	H	1-2
18	Peterborough U.	A	2-3
25	(2) EXETER CITY	H	
Dec. 2	Newport County	A	2-2
9	Southend U.	H	0-0
16	Portsmouth	A	2-2
23	Crystal Palace	H	5-0
26	Halifax Town	A	P

1962

Jan. 6	(3) Notts County	A	P
13	Bournemouth	A	0-0
20	Watford	H	3-1
27	(4) Port Vale	H	P
Feb. 3	Hull City	A	1-0
10	Northampton T.	H	2-2
17	(5) Lincoln City	A	2-2
23	Brentford	H	
Mar. 2	Reading	A	
10	(6) Bristol City	H	
17	Bradford	A	
23	Notts County	H	
31	(S.F.) Shrewsbury	A	
Apr. 7	Peterborough U.	H	
14	Port Vale	A	
16	Halifax Tn.	H	
20	Torquay Utd.	H	
21	Newport County	H	
23	Torquay Utd.	A	
28	Southend Utd.	A	

May 5 (Final)

FOOTBALL COMBINATION

1961

Aug. 22	Leyton Orient	H	0-0
Sept. 6	Southend Utd.	A	1-3
13	Portsmouth	A	1-7
20	Bournemouth	A	0-3
26	Birmingham	H	1-1
Oct. 4	Aldershot	A	1-2
10	Watford	H	1-3
Nov. 1	Millwall	A	0-1
7	Fulham	H	1-4
14	Southampton	H	2-0
22	Coventry City	A	2-1
29	Reading	A	1-3
Dec. 5	Brighton	H	4-2
12	Brentford	A	3-1
19	Charlton	H	P

1962

Jan. 3	Chelsea	A	P
9	Chelsea	H	0-0
17	Leyton Orient	A	1-2
23	Portsmouth	H	2-0
31	Birmingham City	A	1-1
Feb. 6	Bournemouth	H	3-2
13	Watford	A	1-3
20	Aldershot	H	5-0
26	Queen's Park R.	A	
Mar. 6	Millwall	H	
14	Fulham	A	
20	Southend Utd.	H	
28	Southampton	A	
Apr. 3	Coventry City	H	
10	Reading	H	
17	Brighton	A	
23	Brentford	H	
May 2	Charlton	A	
To be arranged	Q.P.R.	H	

Our Visitors

This evening we welcome Brentford F.C. to the County Ground for our second Friday evening game of the season. The "Bees" made a bad start to the season, but recently have staged a fighting recovery, which has carried them several places up the table.

Pen pictures of the players from whom the team will be selected are as follows:—

Gerry Cakebread (Goalkeeper)

A former Junior who turned professional in June 1955. His sound positional sense twice earned him selection as reserve for England's Under 23 team. A part-timer who spends his days as an Admiralty draughtsman, Gerry has been ever-present since October 1958 and is approaching his 300th League game.

Ken Coote (Right Back)

In his 13th season with Brentford, Ken has made over 400 League appearances. A versatile player who signed as an inside forward from Wembley Town and has since operated in eight positions but mainly at wing half and full back. His consistency earned representative honours with the London F.A. and the Third Division (South) team.

Tom Wilson (Right Back)

This former Southampton and Fulham player's career has been dogged by illness and injury. Was once told to give up the game but was Malcolm MacDonald's first signing for Brentford in July 1957 and has made nearly 200 League appearances.

Ray Reeves (Left Back)

Joined Griffin Park staff last July after lengthy service with his home town team, Reading. Is now a part-time player, having entered the greengrocery business.

Jim Belcher (Right Half)

Another newcomer to the pay-roll, having signed from Ipswich Town in the close season. Started as an inside forward with West Ham and subsequently saw service with Crystal Palace. Went to Ipswich in 1958 close season.

Ian Dargie (Centre Half)

Signed from Tunbridge Wells in 1952. Soon established himself, but a broken leg on Easter Saturday 1959 threatened his career and ended a consecutive run of 104 games. After a nine-month lay-off came back so well that he was ever-present last season.

Tom Higginson (Left Half)

This industrious Scot made the No. 6 shirt his own last season. Twice signed by Manager MacDonald, firstly for Kilmarnock, then for Brentford two years ago. A Powderhill sprinter, Tom is yet another former inside forward.

John Hales (Outside Right)

Transferred in September 1958 from Glasgow junior club St. Rochs. Can operate equally effectively on either flank and has made nearly 50 League outings, although he is not yet 21.

Brian Edgley (Inside forward)

Another close-season signing. Brian had four years with Shrewsbury Town before joining Cardiff City in 1960. Brian can operate in all three inside forward positions.

George Summers (Centre forward)

George was signed at the age of 17 from Glasgow junior side, Shawfields in March 1959. He replaced free-scoring George Francis for the last three months of last season, netting 6 goals in 15 games.

Danny O'Donnell (Inside left)

Another Scottish junior, formerly with Kirkintilloch Rob Roy. After

Continued on page 7

C. Dunn & Son

BUILDERS & DECORATORS

Alterations, Renovations, Conversions
Plumbers and Sanitary Engineers
503 CRICKLADE ROAD Tel. 22522

FOR PAINTS OF GOOD QUALITY
H. S. HODGES & SONS
(SWINDON) LTD.

CRICKLADE ROAD - SWINDON
PHONE 22422

Dulux, Brolac, Friary, Valspar, Wallcharm, etc.

NOTTON'S CAFE

COUNTY ROAD

200 yards from Ground

RIGHT ON THE BALL

Harold Fleming

24 REGENT CIRCUS - SWINDON

Phone 22813



FOR ALL SPORTS EQUIPMENT

Also, Scout, Guide, Cub and Brownie Wear

OUR VISITORS—continued

a short spell at Brentford returned to Scotland to do his National Service and came back to Brentford last March in time to make two League appearances.

George McLeod (Outside Left)

Came to the fore with Luton Town and was transferred to Brentford in October 1958. George, who hails from Inverness, has played nearly 200 League games.

Jimmy Gitsham (Left Back)

Another former Junior signed in 1950. Made the first of his four League appearances to date last April.

Johnny Brooks (Inside Right)

Joined Spurs from Reading and won 3 England Caps in 1956. Moved on to Chelsea and to Brentford last September. An artistic player who also packs a hard shot.

George Francis (Centre forward)

Former junior who made his debut in February 1955 and scored 110 goals before moving to Q.P.R. in close season. Returned to Brentford after four months and has hit goal trail regularly since.

Mike Block (Outside Right)

Another to join Brentford from Chelsea last month and he can operate at inside forward or on the wing. Born at Ipswich, he is a former Chelsea Junior.

GODDARD & Co.

Wholesale and Retail

WINE - SPIRIT - BEER
AND CIDER MERCHANTS

9 REGENT STREET, SWINDON

Telephone 22415

Also at

4 WINGATE PARADE, SWINDON

We are your **Main Distributors** for
VAUXHALL and **JAGUAR** cars
BEDFORD Vans and Trucks, etc.

Any make of Car or Truck
supplied - Used Vehicles a
specialised part of our
business.

SKURRAY'S
SWINDON

Telephone: 22266

H. HIBBERD LTD.

Plant Hire Contractors

TRACTORS and SCRAPERS
BULLDOZERS
DOTT SHOVELS
DIGGERS
ROAD ROLLERS

40 NEWPORT STREET, SWINDON

Telephone 6125

Swindon Bacon Curing Co. Ltd.

Specialists in
Bacon, Pork & Cooked Ham

50 FLEET STREET
SWINDON

Telephone: 22122

WARNES (Swindon) Ltd.

Electrical Contractors
Radio and Television

Contractors to:
SWINDON TOWN FOOTBALL CLUB
51/52 COMMERCIAL RD., SWINDON
'Phone 6346/7
160 COUNTY RD., SWINDON
'Phone 6346/7
9 SWINDON ST., HIGHWORTH
'Phone 379
7 CLIVE PARADE, SWINDON
'Phone 6346/7

DAY RETURN TICKETS

On Weekdays and Sundays (services permitting), available in each direction by any train the same day. From Swindon Junction to:-

	2nd Class
Bath Spa	7/6d.
Bristol (T.M.)	9/0d.
Weston-super-Mare	11/6d.

Other fares available. Ask for pamphlet B7/411, giving full information.

BRITISH RAILWAYS

Western Region

W. B. CARTER

Newsagent, Tobacconist and Confectioner
Large selection of Boxes of Chocolates
always in stock

CORONA, TIZER, DRINKS, etc.

Agents for Wall's Ice Cream

188/190 FERNDAL RD., SWINDON

Telephone: 3089

MILLS & MER

SWINDON TOWN v. BRENTFORD

SWINDON TOWN

RIGHT WING

Colours: RED SHIRTS,

O'Hara

Wollen (2)

Morgan (4)

Owen (5)

Summerbee (7) Hunt (8) Smith (9)

Referee—

Mr. G. D. Roper
(Newmarket)



McLeod (11) O'Donnell (10) Francis

Higginson (6) Dargie (5)

Gitsham (3)

Cakebread

BRENTFORD

LEFT WING

These teams are subject to

16-17 BRIDGE ST. S

ENGLAND'S QUALITY
SERVICE

Your Car washed in under

THE INSTANT

6/- ANY MAKE —

Local Station

MARLBOROUGH ROAD
SWINDON

QUEENS ROAD
READING

Make your goal . . .

McILROYS RESTAURANT

Top of the Catering League
COFFEE - LUNCHES - TEAS
Parties catered for.
Regent Street, Swindon. Tel. 5294

THE PLESSEY COMPANY Ltd.

After years of achievement have great expansion plans for the future.

**TECHNICAL STAFF
CLERICAL STAFF
MANUAL WORKERS**

are essential for this progress.

Interested persons please apply to the Personnel Department.

MERRICKS LTD.

TFORD Kick-off 7.30 p.m.
INDON TOWN
ED SHIRTS, WHITE SHORTS LEFT WING

O'Hara

Trollope (3)

Owen (5)

Chamberlain (6)

Smith (9)

Atkins (10) Weaver (11)

Linesmen —

Red Flag —

Mr. K. R. B. Hale
(Bristol)

Yellow Flag —

Mr. D. Milverton
(Bath)

) Francis (9) Brooks (8) Block (7)

Dargie (5) Belcher (4)

3) Coote (2)

Cakebread

BRENTFORD

are subject to alteration

RIGHT WING

ST. SWINDON PHONE 5365

QUALITY CAR WASHING SERVICE

d in under 5 minutes by

ANT CAR WASH

KE — 4 WASHES £1

ical Stations:

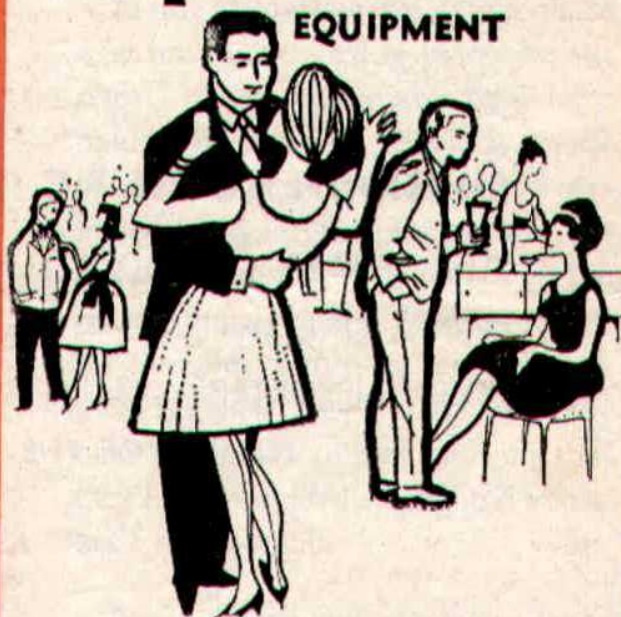
**JEENS ROAD
READING**

**QUEENS ROAD
BRISTOL**

U
P
H
O
L
S
T
E
R
S
•
R
E
M
O
V
A
L
S

INSIST ON

Garrard EQUIPMENT



For Superb Tape and Record Playing



Fitted by the World's leading manufacturers.

WILSONS (SWINDON) LTD.

**BUILDERS OF
MODERN ATTRACTIVE HOUSES
AND BUNGALOWS**

All enquiries to Head Office:

**90 COMMERCIAL ROAD
SWINDON 6361-3**

ONE QUALITY ONLY—THE BEST!
FRESH SUPPLIES DAILY

York Road Fisheries

SWINDON

WET, DRY or FRIED Tel.: 3680

Rent your T.V. - Washing Machines
Spin Dryers - Electrical Installations
from

D. V. HOLLAMBY LTD.

138 High St., Wootton Bassett, Wilts.

Telephone 295

ALL LEADING MAKES IN STOCK

DEMPSTER ENTERPRISES, offer a modern fleet of 4 and 6 seater self-drive hire cars, for your pleasure and convenience. For advance bookings apply:-

Dempster Enterprises

38 VICTORIA ROAD, SWINDON

Tel. 6460

Howard Autos, Swindon's Main Cotton Motor Cycle distributors always have a good selection of guaranteed used cars for you to choose from.

HOWARD AUTOS

134/5 MANCHESTER ROAD

Tel. 6603

and at 3 WELLINGTON STREET, SWINDON

SWINDON TOWN F.C. SUPPORTERS' CLUB

THE OFFICIAL HANDBOOK FOR 1962 IS NOW ON SALE.

PRICE: ONE SHILLING. THESE MAY BE OBTAINED AT

THE SUPPORTERS' CLUB ROOM OR FROM ANY

MEMBER OF THE COMMITTEE.

'BAILEY'S'

2 Cheney Manor Road - Swindon

NEWSAGENT :: TOBACCONIST
CONFECTIONER

Personal Attention and Satisfaction
always assured.

MEET YOUR FRIENDS FOR AN
ENJOYABLE EVENING AT

THE KINGSDOWN INN

(Host A. W. Vann)

FULLY LICENSED - ARKELL'S BEERS
SNACKS, Etc.

Stratton St. Margaret

Tel. 3283

A. WHEELER & SON

330 CRICKLADE ROAD

PHONE 22095

FOR QUALITY COALS
AND PROMPT SERVICE

Lowest Terms for Self Drive Cars

Free Deliveries - Glasses loaned free
for your Wines, Spirits and Beers

115 CRICKLADE ROAD

"The Corner Off Licence"

Ring 4711 or call at

Supporters' Club Notes

No doubt many will have read that further payments, totalling £1,250, have just been made to the Directors of the Football Club, being £1,000 for General Purposes and £250 to the Floodlight Fund.

These amounts were, of course, derived from our weekly competition profits.

The money passing in respect of this competition does not, however, benefit the Football Club exclusively.

Fortunately, the majority of the prizewinners are in the happy state of being able to congratulate themselves on receiving some extra pocket money, but occasionally the prize does more than provide that.

Recently, a lady, who won £50, received her cheque while in hospital,

and we trust that the pleasure of winning it will speed her recovery.

In the meantime we thank those who have continued to patronise our efforts. There are many who have paid their shillings regularly, week by week, since the competition was inaugurated several seasons ago, and have not yet seen their names on the list of prizewinners. They grumble, for the sake of form, when we touch them for their subscriptions, but they have the satisfaction of knowing that they have provided substantial assistance to the Club.

We take this opportunity again to remind supporters of the Club Handbooks, on sale at our office, price one shilling.

Lucky programme holders on 10th February were: 1111—Mr. R. A. Tranter, Cross Tree, Kempsford. 2225—Not claimed.

Have you purchased your ticket for the

HALF-TIME JACKPOT DRAW

TICKETS 6d. EACH on sale on the Ground

FOUR PRIZES

★ ★ ★

Result of Draw on Saturday, 10th February, 1962

1st Prize—£39.10.0. Ticket No. 6321

2nd Prize—£29.12.6. Ticket No. 11523

3rd Prize—£19.15.0. Ticket No. 8180

4th Prize—£9.17.6. Ticket No. 2602

★ ★ ★

**TODAY'S WINNING NUMBERS WILL BE ANNOUNCED AT
HALF-TIME.**

The following will assist you to record the numbers and prizes as
announced.

1st PRIZE	No.	Amount £.....
2nd PRIZE	No.	Amount £.....
3rd PRIZE	No.	Amount £.....
4th PRIZE	No.	Amount £.....

Winning numbers will also be published in "Evening Advertiser"

The Rendezvous of all Sportsmen . . .

THE CROWN INN

(Host: Frank Pleyer)

Arkell's Best Ales : Fully Licensed
Snacks, etc.

STRATTON ST. MARGARET Tel. 2339

SUPPORT YOUR HOME

CIVIL DEFENCE

Plays a vital part in saving lives

Particulars:

CIVIC OFFICES - SWINDON

WIN OR LOSE !

THE FOOD IN THE

China Restaurant IS BEST

107 COMMERCIAL ROAD

SWINDON 6888

Open Daily 12 noon - 11.30 p.m.

For all Chinese and English Dishes

**SPECTATORS ARE REQUESTED
NOT TO CROSS THE PLAYING
PITCH AT THE END OF
THE GAME**

COATE GARAGE



THE ALCOHOL FUEL

REPAIRS
SERVICING
TYRES

★

OVERHAULS
REBORING
WELDING

Props.: E. V. & W. H. Mattick
MARLBOROUGH ROAD, SWINDON

For something a little different, try

DON JONES

HIGH CLASS CONFECTIONER
AND TOBACCONIST

Always a good selection of
SUCHARDS' - TOBLER
TERRY'S

Quality Chocolates and Presentation
Boxes

112 COMMERCIAL ROAD

6012

SWINDON

6012

Typewriters from £10

FULLY GUARANTEED

DOBELL SHEARMAN

& CO. LTD.

26 HIGH ST. & 33 FARINGDON RD.,
SWINDON Telephone 4961

Only 800 yards to your Dream Car—

NEW ALPHA MOTOR Co.

(SWINDON) LTD.

QUEENS DRIVE, SWINDON

Tel. 5062/63

FOR TOP QUALITY USED CARS

Open 7 days per week from 7 a.m. to 10.30 p.m.

Servicing for all makes of cars

DIVISION III

	P.	W.	D.	L.	F.	A.	Pts.
Portsmouth	31	20	7	4	60	31	47
Bournemouth	33	15	13	5	55	34	43
Bristol City	33	18	5	10	70	44	41
Grimsby Town	32	18	4	10	48	41	40
Reading	31	17	4	10	57	49	38
Watford	33	13	10	10	53	53	36
Peterborough United	31	16	4	11	72	63	36
Northampton Town	32	13	8	11	61	40	34
Crystal Palace	32	13	8	11	69	56	34
Queen's Park Rangers	30	13	7	10	78	53	33
Coventry City	30	12	8	10	47	47	32
Notts County	29	12	6	11	51	51	30
Southend United	33	9	12	12	41	48	30
Port Vale	30	11	7	12	42	39	29
Bradford	28	12	4	12	52	54	28
Swindon Town	30	8	12	10	49	52	28
Hull City	30	10	7	13	39	38	27
Shrewsbury Town	32	9	9	14	54	64	27
Halifax Town	27	10	6	11	42	46	26
Barnsley	30	8	8	14	53	67	24
Lincoln City	31	7	10	14	40	55	24
Brentford	31	9	5	17	33	61	23
Torquay United	31	8	4	19	54	82	20
Newport County	31	4	4	23	32	74	12

Chappell's Funeral Service

(Fun. Dir.: A. A. Winchcombe)

**196 COUNTY ROAD
SWINDON**

24 hour Service Tel. 6073

*Your local "TEAM" for RENAULT
Sales and Service*

**CORONATION
CAR SALES**

67/68 VICTORIA ROAD

Telephone 4964

**SEA VIEW HOLIDAY
CAMP**

YOUR HOST — Mr. BENNETT

WYKE REGIS - WEYMOUTH
Dorset

"COAL!"
"COAL!"
"COAL!"

J. WILMER

ST. MARGARET'S ROAD, SWINDON
Telephone 22535

MEET YOUR FRIENDS AT THE

Southbrook Inn

(Hosts: Mr. and Mrs. Jack Scutts)

FULLY LICENSED
CLINCH BEERS, ETC.

SOUTHBROOK STREET, SWINDON
Tel.: 5837

STOP!

LOOK!

NU-HOMES

For all Household Fitments

Paints - Emulsions - Wallpapers
Kitchen Units and Bathroom Suites,
etc.

176a Manchester Road
TELEPHONE 22178

FORTHCOMING MATCH . . .

FOOTBALL COMBINATION

SWINDON TN. v. MILLWALL

TUESDAY, MARCH 6th, 1962

Kick-off 7.30 p.m.

**BRITANNIA
MOTORS**

Proprietor: A. GODWIN

205-206 RODBOURNE ROAD
SWINDON PHONE 5303

- **TYRES**
NEW AND REMOULD
CASH OR EASY PAYMENTS
- **ACCESSORIES**
- **QUICK SERVICE AND REPAIRS**
AT SWINDON'S MOST MODERN
LUBRICATION BAY AND
WORKSHOP

*For High Class
Central Heating, Plumbing
Painting and Decorating
Electrical Installations
and Repairs*

•

NORTH WILTS

Sanitary & Heating
Co. Ltd.

NEWPORT ST., SWINDON

'Phone: 5373/4

Always at your service

L. BIBBY

For all Types, Rags, Iron and Metal,
etc. Spot Cash Paid. Please Telephone
2101 and our van will call.

THE PADDOCK, ERMIN STREET
STRATTON ST. MARGARET

Walcot Greengrocer

G. E. STAMMERS

at

**1 SUSSEX SQUARE
SWINDON**

SWINDON **22526**

*CAN ALSO BE YOUR LUCKY NUMBER ! ! !
if you ring*

HOLMES & LUCAS

14A REGENT STREET :: SWINDON

for all your

TELEVISION, RADIO AND ELECTRICAL REQUIREMENTS

LUCKY PROGRAMME

Please retain your programme. An announcement will be made at half-time of two numbers and the holders will be given a stand seat at the next Division III game. The persons who purchased the programmes bearing the winning numbers should call at the office after the game and claim their seats.

2121

FRIED FISH AND CHIPS

Always Fresh - Always Hot

WALCOT FISHERIES
Sussex Square

Wet fish and frozen foods all refrigerated display.

HATTON'S NEWSAGENCY
A. J. D. WOODHOUSE & A. SMITH
Newsagents : Tobacconists : Confectioners
Agents for Wessex School of Motoring
Main Booking Agents for Millers Coaches
6 REGENT CIRCUS (NEAR G.P.O.)
Telephone Swindon 22731

For Insurance or Hire Purchase
CARS - CARAVANS - MOTOR CYCLES, etc.
Consult

D. & H. HENTY LTD.

54 COMMERCIAL RD., SWINDON
SWINDON 5258

PANKHURST

**The Palace, Gorse Hill,
Swindon**

MOTOR CYCLE - SCOOTER AND
THREE-WHEELER SPECIALISTS

Open Mon. to Sat. 9 a.m. - 8 p.m. Phone 3466

MORGAN'S

IRONMONGERS

C.A.S.M.S. (Swindon) Ltd.

2 SUSSEX SQUARE, WALCOT, SWINDON
also at 163 RODBOURNE ROAD Tel. 22516
Paraffin services to all areas town and country

Everything for the home
Precision Tools for Engineering Trade,
Tools for all trades

Maylott Studios

For GROUP & SPORT Photographs
OFFICIAL PHOTOGRAPHER TO
SWINDON TOWN FOOTBALL CLUB

31 FARINGDON RD. Tel. 22792